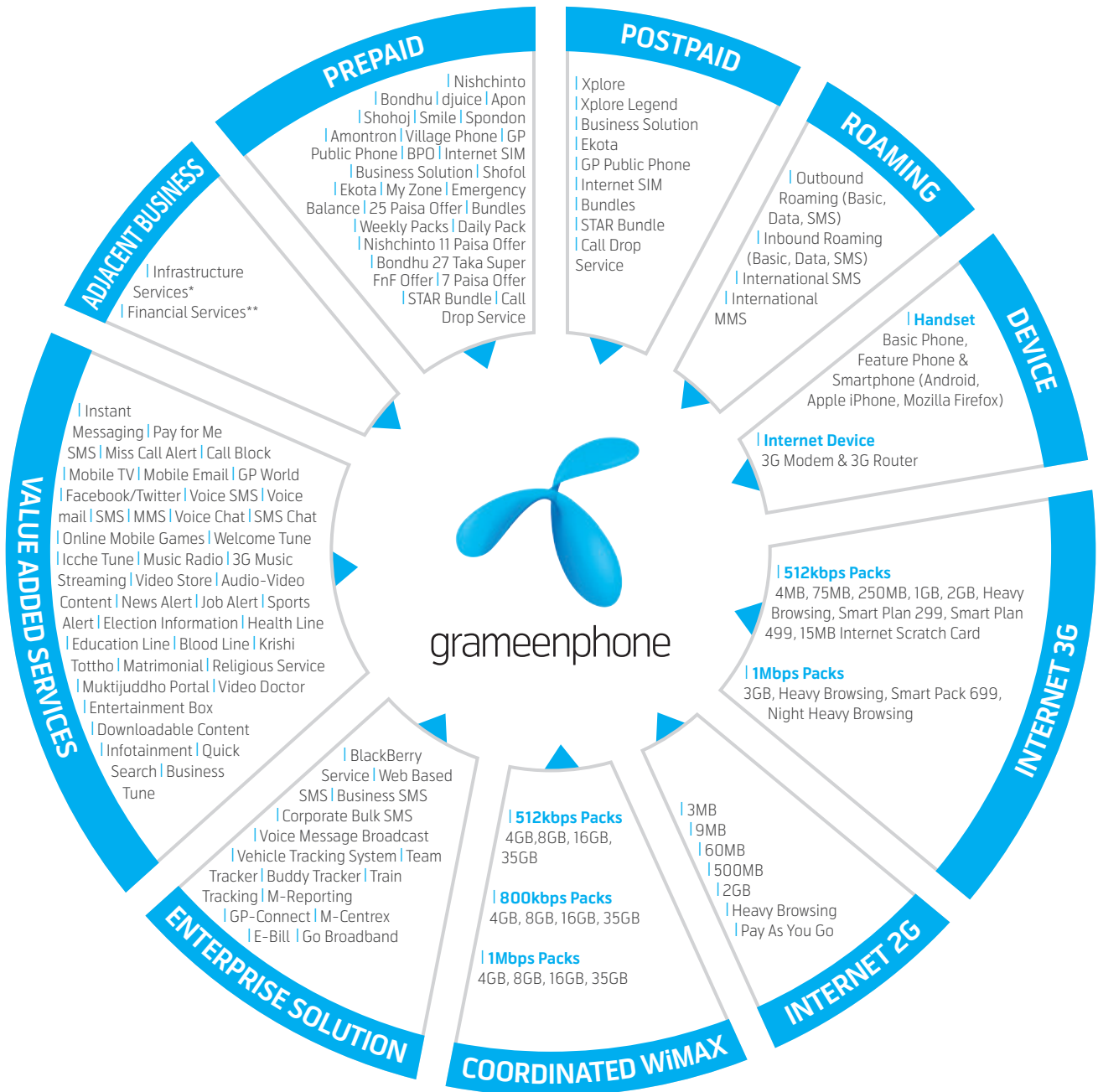


products & services



Overview

Business Performance

Sustainability

Governance

Financial Analysis

Additional Information

* In compliance with BTRC guidelines, GP is sharing its passive infrastructure with other licensees under "Infrastructure Services".

** Introduced different "Financial Services" in electronic ticketing, bill collection, electronic lottery and partner bank services under the brand "MobiCash".